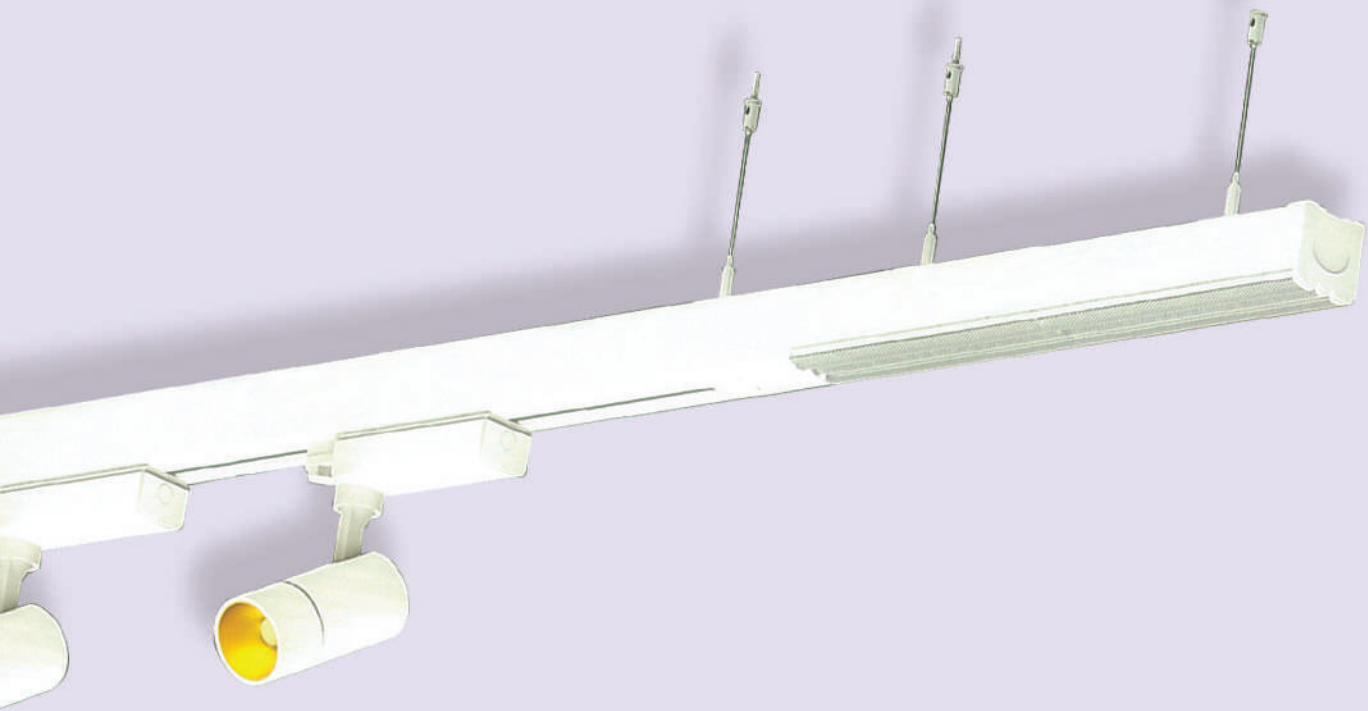


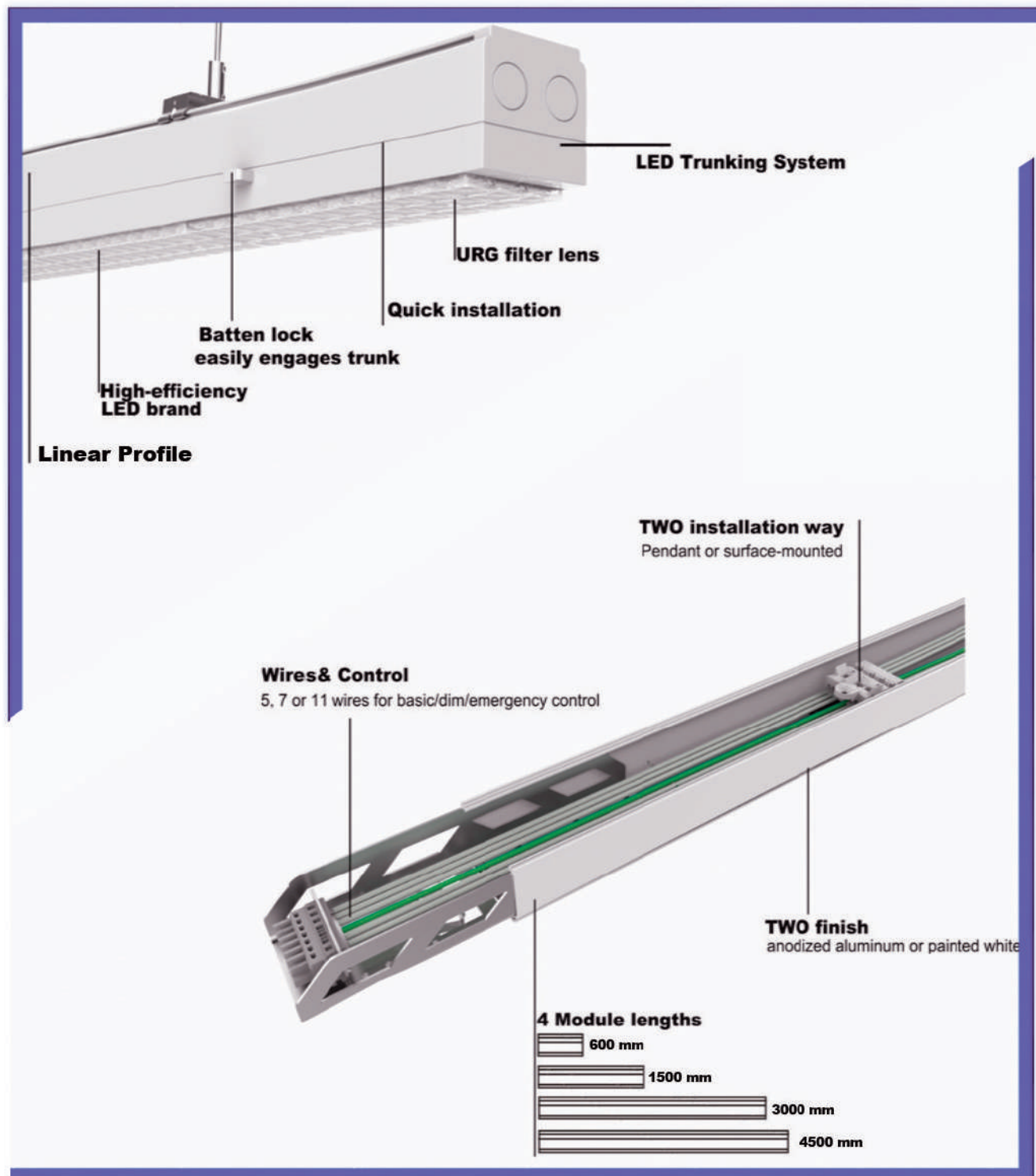
ECOLUX
INDIA



LED LINEAR **TRUNKING** SYSTEM

ECOLUX INDIA PVT LTD
ledtrunking@ecoluxindia.com
www.ecoluxindia.com

LED LINEAR TRUNKING OVER VIEW



COMPANY PROFILE

Ecolux India Pvt Ltd, offers and exemplary selection of arcitectural quality LED luminaries backed by a resolute commitment to superior customer service.

Ecolux India Pvt Ltd., a part of the Suvino Group (www.suvino.com) was established in 2012, to manufacture LED Luminaries. Our Head Office is in Mumbai (the business capital of India) and factory on the outskirts of the city

Area: 11,000 Sqft
Total Number of Employees: 125
Total Number of R&D Staff: 12
Number of Production lines: 6
QA/QC: ISO 9001-2000
Focus Markets: Europe & America
Shipment Port: Nhava Sheva: (50 kms from Factory)
Over 100 customers in India



Our R&D, Product Development & Assembly setup boasts of a full range of Machinery including Spectrometer, Gonio-photometer, Surge Tester, Driver Analyzer, 3D Printer, SMT Machine, Reflow Oven and many others. We also manufacture our own Printed Circuit Boards.

Ecolux Vision

- Speed – Flexible – Consistent
- Customization
- Network Intelligent
- Customer Friendly Product.
- Innovative and creative design
- Modularization
- Quality and Cost conscious
- Environment Friendly Product



LED LINEAR TRUNKING PRODUCT

C Line

Power: 40w / 50w / 65w / 80w

CRI>80, PF>0.9

Efficacy : 130 & 160lm/w

5 Years Warranty



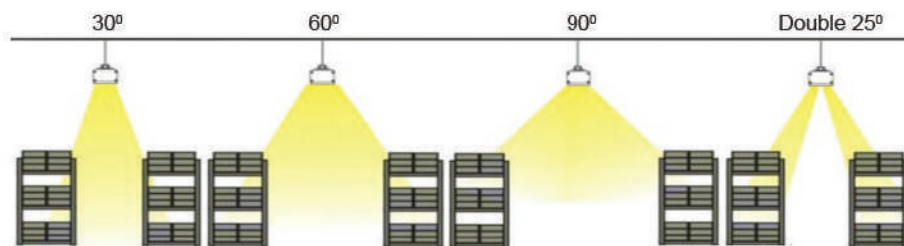
E Line

Power: 36w / 48w / 60w / 72w

CRI>80, PF>0.9

Efficacy : 130lm/w

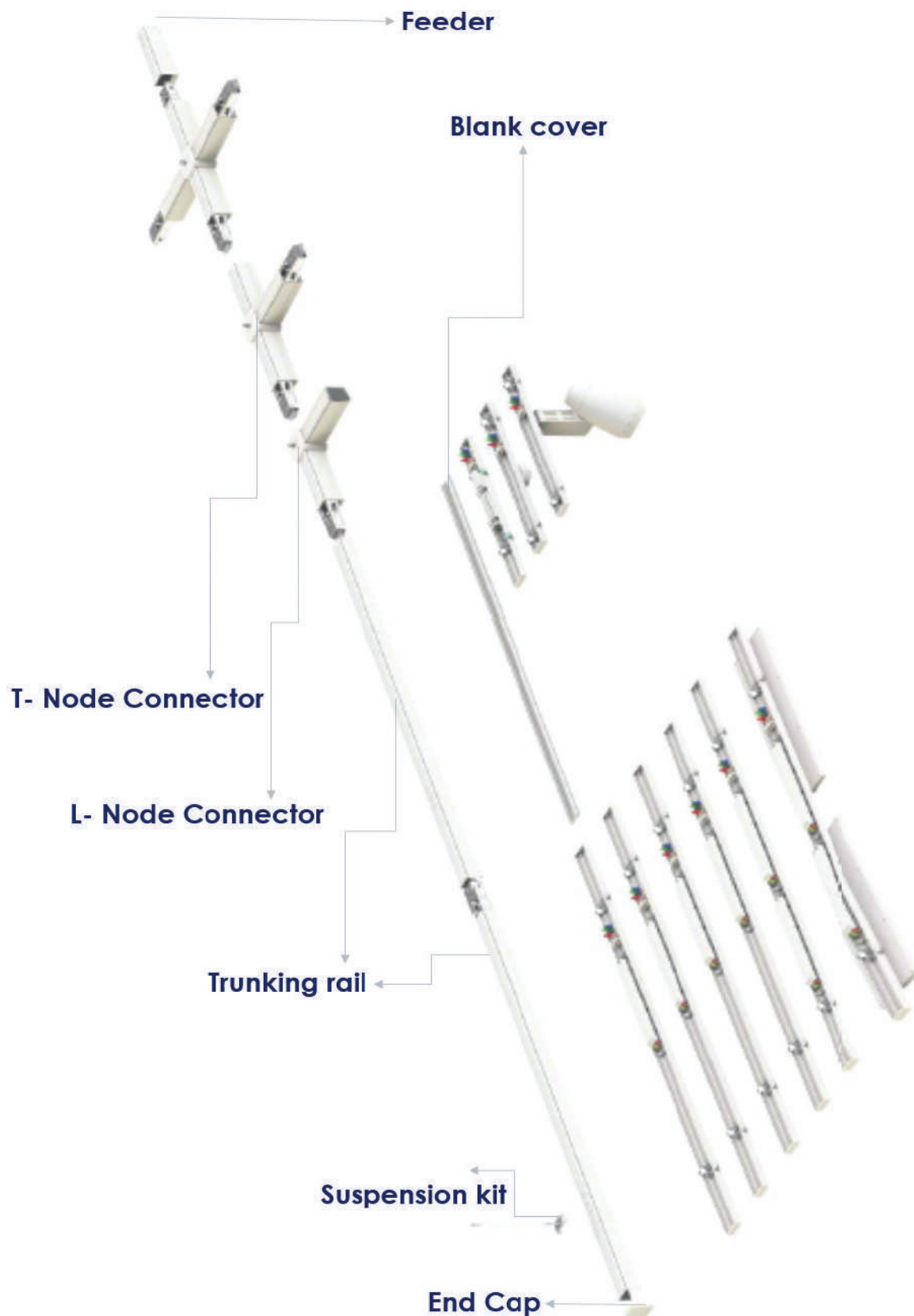
5 Years Warranty



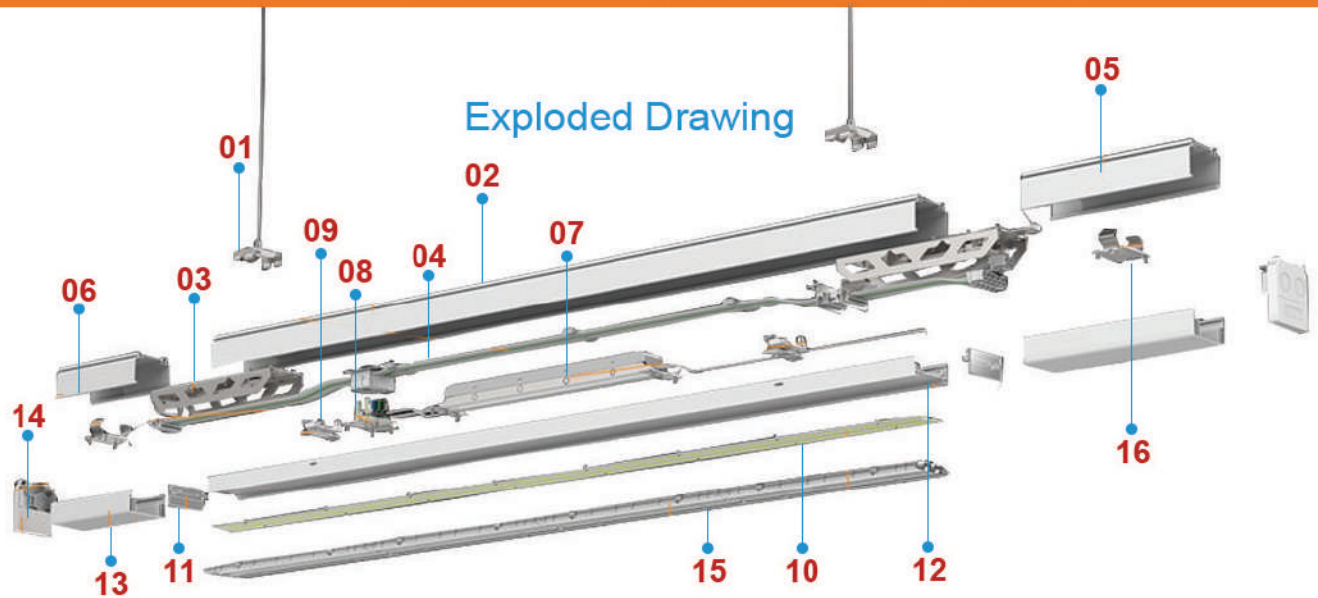
ADVANTAGES

- Modularized Design
- Seamless Connection
- Functions: DALI, Emergency, 0-10V, Sensor, Track Light
- Beam Angle : 30° / 60° / 90° / 110° / 120° / Double 25° / Right 25° / Left 25°
- TUV-GS, RCM, CE, ROHS, (All Pending)
- Europe Design Patent – (Pending)
- Application: Supermarket, Warehouse, Factory Etc.,

T-NODE CONNECTION VIEW



TRUNKING SYSTEM EXPLODED VIEW



- 01** Mounting clamps for a safe and easy surface or suspended installation
- 02** High grade aluminum trunking rail with a white finish
- 03** Strong and durable rail connector featuring a quick-snap system for tool free installation
- 04** Harness with 2.5mm² wires including terminal blocks on both ends and a WAGO connector supporting 5,7 or 11-wires
- 05** Feed-in-box for the connection to the power grid. Available with 5,7 or 11 - Wires
- 06** Feed-out-Box to terminate the line
- 07** Active PFC Power driver available with 30W to 75W. Available with non-dimmable/1-10V dimmable or with DALI
- 08** 5 - 11 Pin WAGO Connector to Support all Features such as 3-phase, dimmable and emergency power
- 09** Quick connectors to easily secure the LED Module on the trunking rails supporting a fast and tool free installation
- 10** High grade SMD2835 chips on a 1mm Aluminum PCB with thermal conductivity >1.5
- 11** Acrylic end-caps to terminate the LED module
- 12** Specially designed PC lenses for an harmonious light distribution available with several beam angels
- 13** High profile aluminum blank cover
- 14** PC end-caps available for our trunking rails as well as for Trilux trunking rails
- 15** High grade aluminum profile with a white finish
- 16** Clamps to secure the blank cover to the trunking rails

LED LINEAR TRUNKING ACCESSORIES

- 25 to 30 seconds to finish installation
- Easy to assemble and disassemble because of Modularization
- 5 years warranty
- Pre-wired Trunking Rail Saves Installation Time & Cost
- 2FT / 5FT /10FT /15FT Pre-wired connector makes it easier and faster to connect the linear trunking rail
- 5, 7, 11 wires supports more function
- 44~220 pieces connection as single line

Accessories



L Node Connector



T Node Connector



X Node Connector



Feedin Box



End Unit-AL



Input Connector



AC Cable Connector



End Cap



Clip Kit



Steel Hanging Chain



Feed in Connector



"L" Node connector



"T" Node connector



"X" Node connector

PRE-WIRED TRUNKING RAIL VIEW

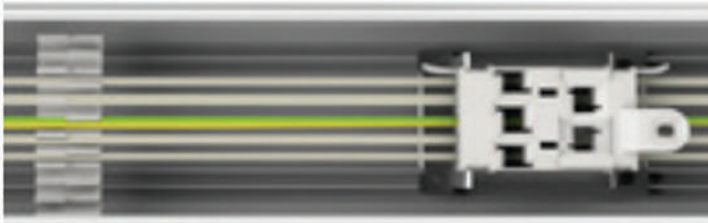
5 Wires Trunking Rail - Length: 15FT / 10FT / 5FT / 2FT

5-wires trunking rail

Green: FG

Blue: N

Black: L1, L2, L3 phase selection knob



7 Wires Trunking Rail - Length: 15FT / 10FT / 5FT / 2FT

7-wires trunking rail

Green: FG

Blue: N

Red/White: D+/D-, DIM+/DIM-

Black: L1, L2, L3 phase selection knob



11 Wires Trunking Rail - Length: 15FT / 10FT / 5FT / 2FT

11-wires trunking rail

D+/D-: Dimming driver

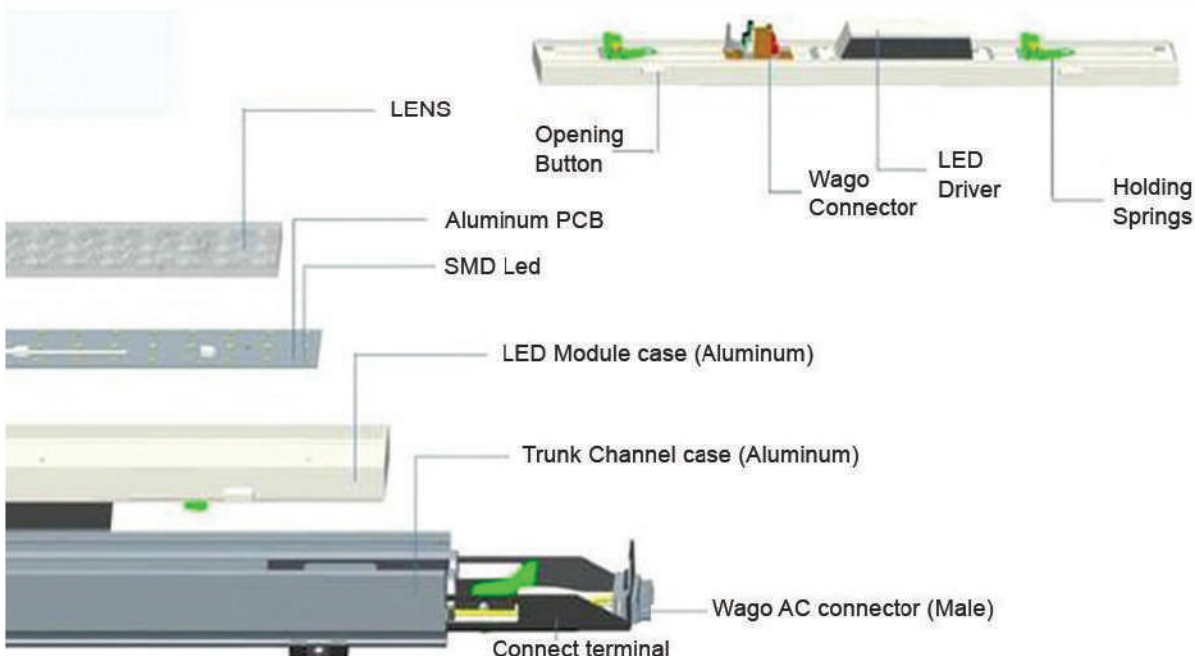
A/B/C/D: Emergency driver and battery

L1, L2, L3 phase selection knob

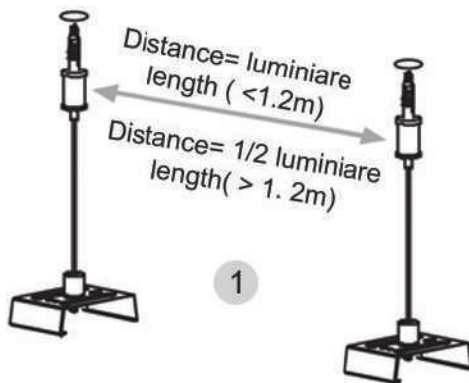


PRE-WIRED TRUNKING WIRE FUNCTION

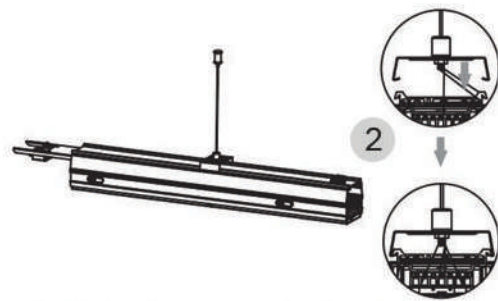
Connector Plug Type in Luminaire	Function Description
3 Pins wire connector plug	Basic Lighting
4 Pins wire connector plug	Basic Lighting + Emergency
5 Pins wire connector plug	Basic Lighting; Basic Lighting + Dimming Basic Lighting + Battery Emergency Basic Lighting + Emergency
6 Pins wire connector plug	Basic Lighting Basic Lighting + Dimming Basic Lighting + Dimming + Battery Emergency
9 Pins wire connector plug	Basic Lighting + Dimming + Battery Emergency + Emergency Power System



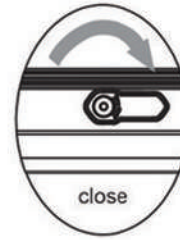
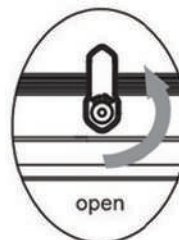
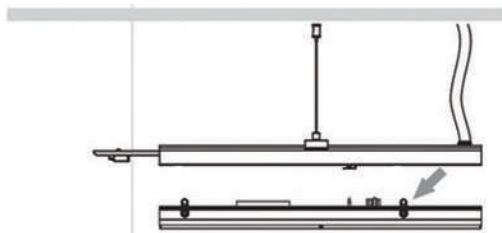
INSTALLATION AND MAINTENANCE GUIDE



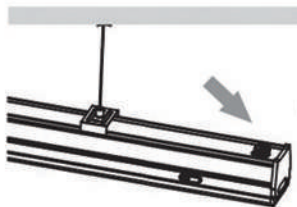
1. Fix the suspension cable into the ceiling. Attach the other end of the suspension cable on the bracket using a screw.



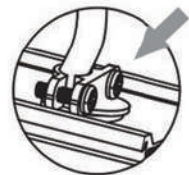
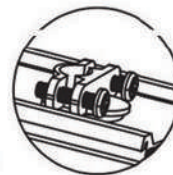
2. Fix the bracket on the luminaire by pressing the bracket as it is shown above.



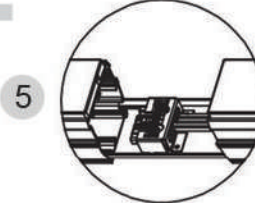
3. Connect the luminaire to the trunking rail. Lock them by switching the open/close button.



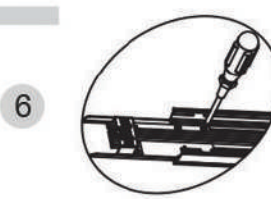
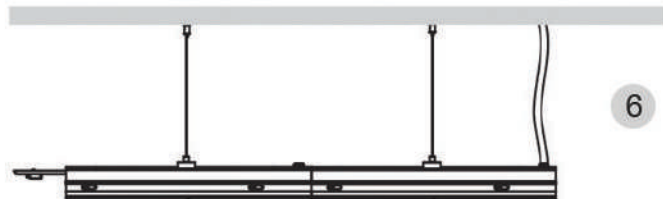
AC input indication



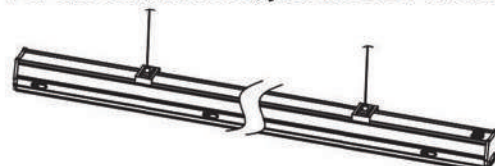
4. Connect AC wires. The wire pipe can be locked with a wire locking fixture to your requirement.



5. The above shows how to connect each trunking rail with a central feed.

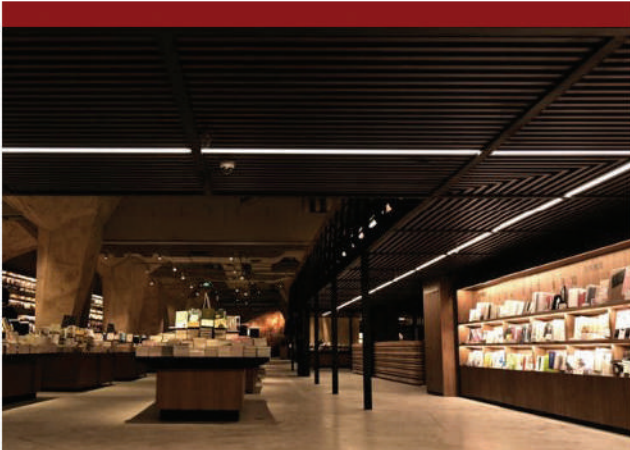


6. For the terminal feed, just unscrew the feed and take the out, then put the wires inside the light.

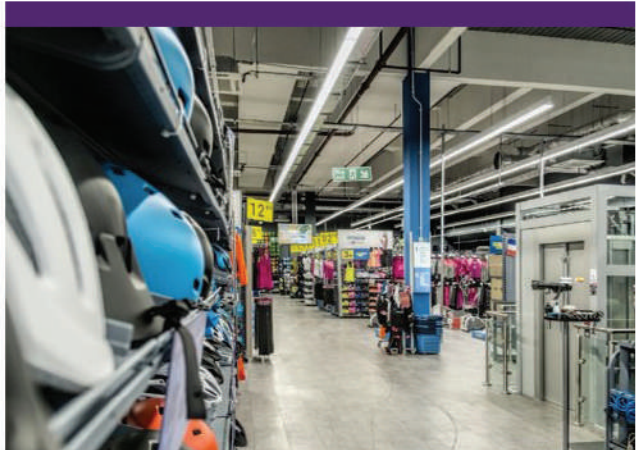


7. Put the end caps on both ends of the light. Installation is finished

APPLICATIONS



Library



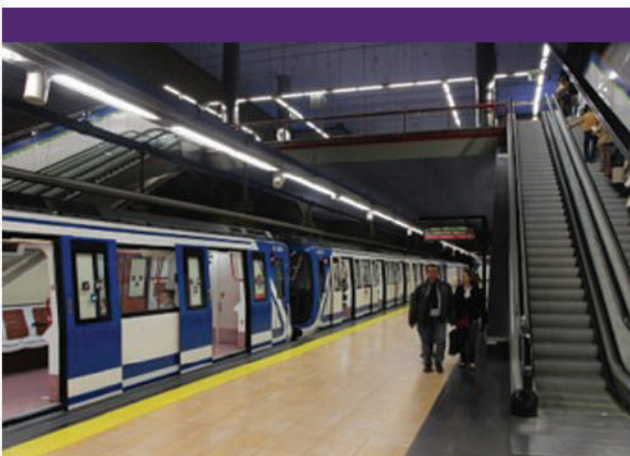
Retail Shop



Parking Area



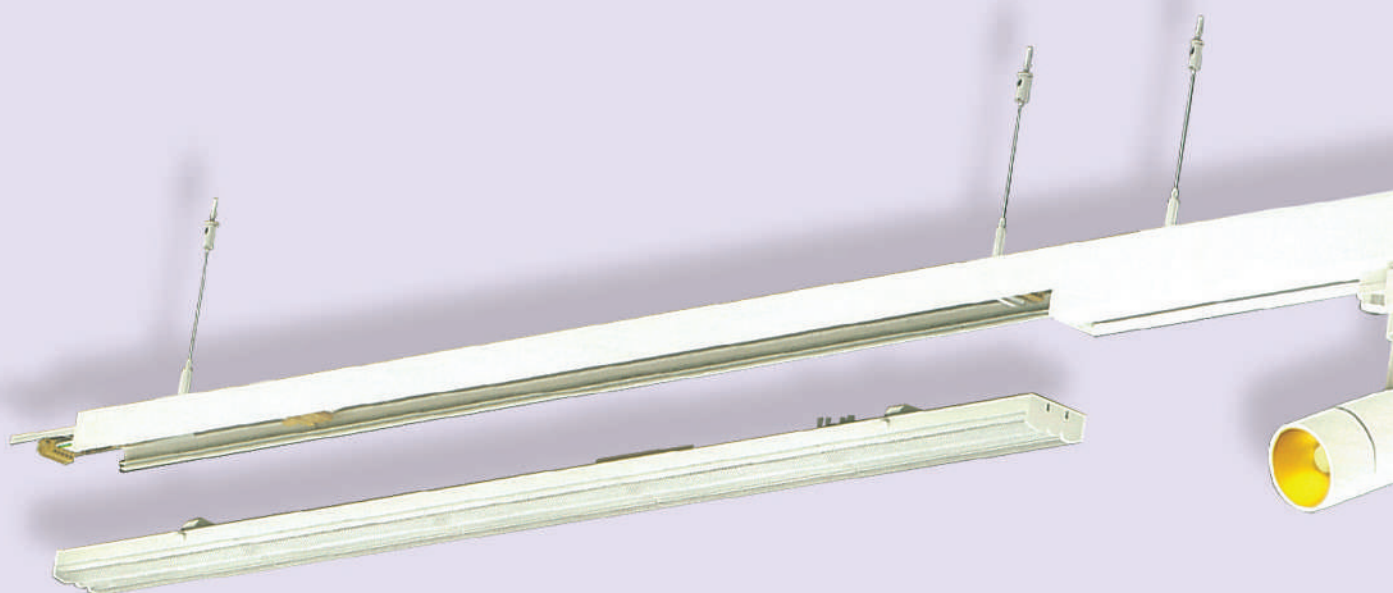
Factory



Metro Station



Warehouse



Head Office: 002, Shubh Apartment, B G Kher Road, Worli,
Mumbai 400018, Maharashtra, India
Factory: Unit Nos. 109 – 114,
Pushpraj Industrial Estate, Naik Pada,
Vasai (East) 401208, Maharashtra, India.
www.ecoluxindia.com

Ujjwal Modi : +91 73030 85443
Md. Iqbal : +91 97648 91306
Head Office: +91 22 4010 8400 / 44